

Toile Industrielle

THE DUNKIRK AREA INDUSTRIAL RELATIONS NETWORK

Toile Industrielle® est une marque déposée par l'AGUR-Dunkerque ©AGUR2015



Which investor has never dreamed of viewing at a glance most of the opportunities to be seized on a territory? With *La Toile Industrielle*® this dream has become reality. The Dunkirk area is the first employment area to equip itself with such a tool.

Dunkirk's *Toile Industrielle*® is a graphic and digital representation of the main exchanges and relations developed by the industries on the Dunkirk employment area. It is also and above all an instrument to build the territory's economic future.

Since 2009, the Dunkirk area has had an instrument to better understand the local economy : *La Toile Industrielle*®. This is a representation of the intercompany flow on the Dunkirk employment area. Their links with the main international markets, ports and subcontractors are shown with coloured arrows. This instrument allows for the sharing of information and for support to cooperation programmes between production units. Thanks to the support of AGUR's partners, including the Greater Dunkirk district and Dunkirk's port, *La Toile Industrielle*® is regularly updated and continues its digital development.

WHAT CAN IT BE USED FOR ?

La Toile Industrielle® has been designed to build a **shared culture**.

This is where an investor may find potential suppliers, customers and subcontractors. It also interests the employment public services who use it as an instrument to analyse territorial skills. It is also a tool for experts reflecting upon the territory's future economic scenarios.



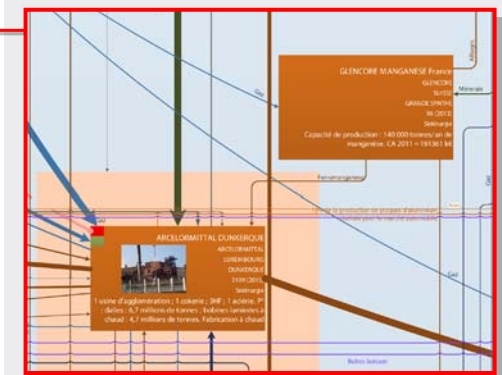
AN ECONOMIC INTELLIGENCE TOOL – WITH MULTIPLE USES :

- Prospecting
- Circular economy
- Port strategy
- Logistics
- Cooperation and synergy
- Simulation
- Economic promotion...



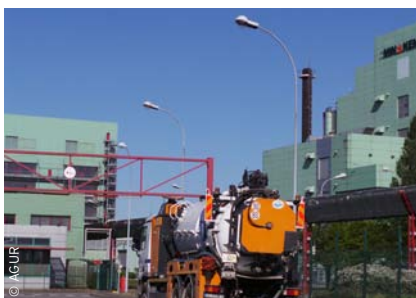
LIST OF THE MAIN LOCAL SUBCONTRACTORS

THE MAJOR INDUSTRIES OF THE DUNKIRK EMPLOYMENT AREA



- Organisation name
- Group
- Nationality
- Personnel
- Activity
- Production informations
- Link to economic information on the web





TO LEARN MORE

I. BERTHIER, « Flandre-Dunkerque : Une Toile pour y voir clair »,
 > [Diagonal](#), novembre 2014, n° 192

L. DIEDRICH, « Ce que nous apprennent les villes-ports »,
 > [Les grands dossiers des sciences humaines](#), automne 2015, n°40

J-F. VEREECKE, « Agence de Dunkerque : voyage au cœur des écosystèmes productifs »,
 > [Traits d'agences](#), FNAU, automne 2014



TO BE CONTINUED ...

Since its publication, *La Toile Industrielle*® has fed many debates. It has been used as a support document including for the negotiations connected to the winding down of Total's refinery. *La Toile Industrielle*® has also been debated with several scientists, including Jeremy Rifkin and Suren Erkman who discovered it in 2015 when they came to Dunkirk.

Whether elected members, economists, entrepreneurs, or developers... All have acknowledged that this instrument's contributions could be huge. *La Toile Industrielle*® is still a young project with significant potential for the territories' economy. Its development will necessarily mean new partners adhering.

Would you like to join in the adventure ?

Contact us !



CONTACTS :

Jean-François VEREECKE
 Deputy CEO
 Observation and prospective departement Director
jf.vereecke@agur-dunkerque.org | +33 (0) 3 28.58.06.30

Kristina MARTINSH
 Junior employee
 Observation and prospective departement
k.martinsh@agur-dunkerque.org | +33 (0) 3 28.58.06.47

LES MEMBRES DE L'AGUR :



Et les communes de :

Bergues, Cappellebrouck, Cappelle-la-Grande, Coudekerque-Branch, Dunkerque*, Fort-Mardyck*, Grande-Synthe, Grand-Fort-Philippe, Gravelines, Leffrinckoucke, Saint-Pol-sur-Mer*, Watten et Wormhout.

* Communes associées depuis Décembre 2010